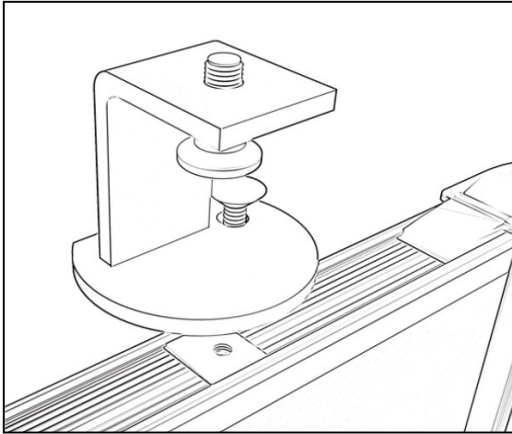
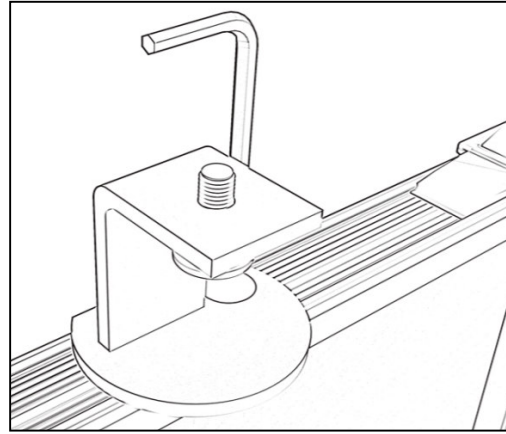


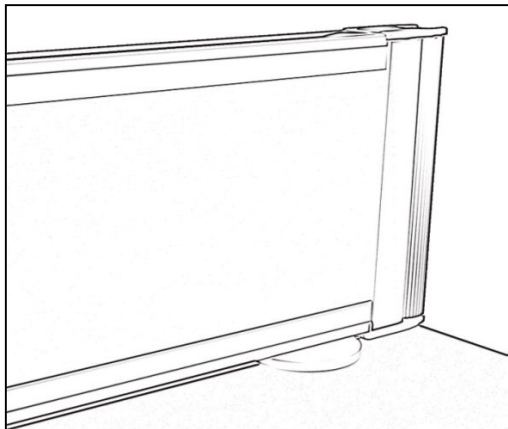
Brackets - attaching screens to desktops



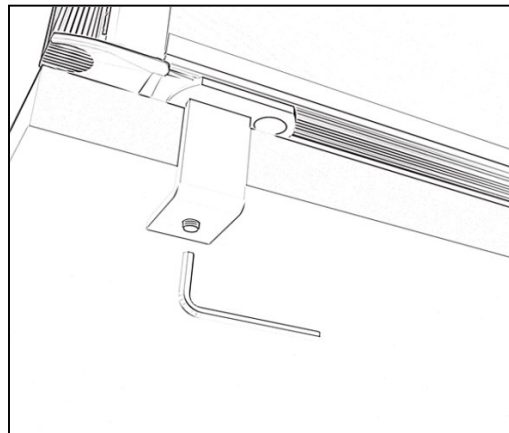
1) Turn the screen you wish to attach a sliding bracket to upside down to reveal the bottom rail and sliding plates.



2) Position the bracket on top of the sliding plate where desired and tighten using a bolt and an allen key.

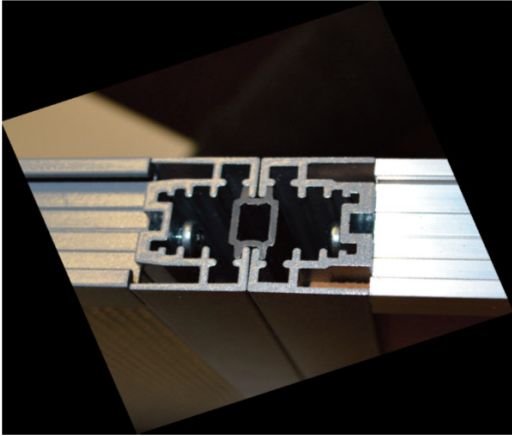


3) Position the screen with attached bracket on the desk edge and loosely tighten bracket.

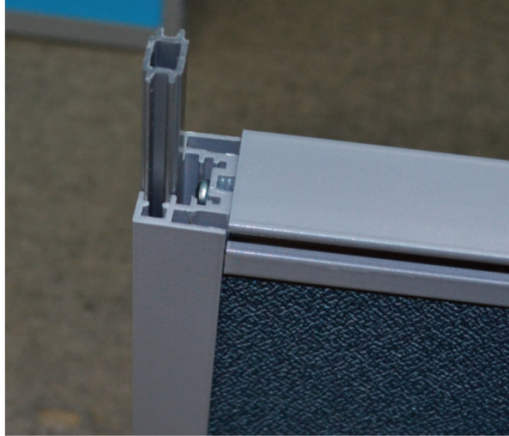


Tighten the clamp to the desk edge using an allen key to secure the screen in place.

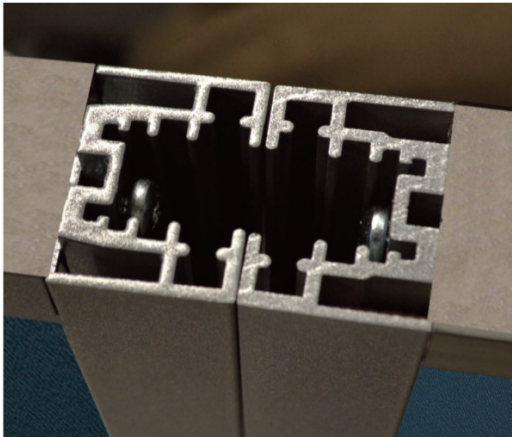
Linking screens - inline configuration



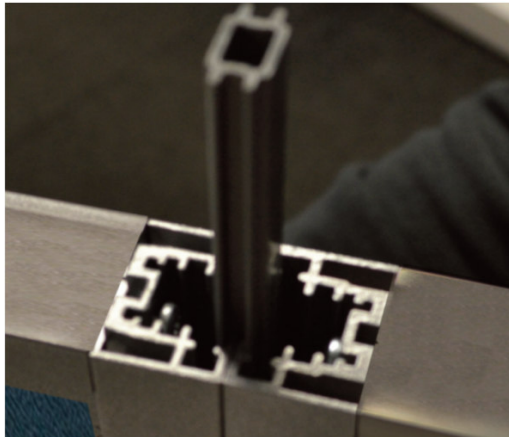
1) Carefully unwrap screens and position first screen where required.
Remove top cap to reveal inline link.



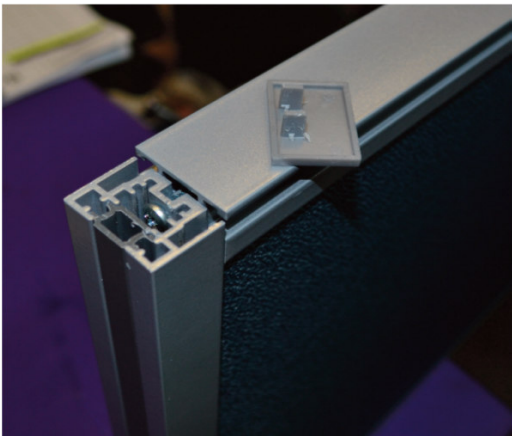
2) Slide inline link out of the sides you wish to link.



3) To form an inline link, align next screen as shown above.



4) Slide inline link in-between the side trims as shown to join the screens.



5) Ensure link is flush with the side trims and then replace the top caps.

Border O&M Manual - cleaning

Due to the high quality finish, our products offer low maintenance upkeep and therefore should not require regular cleaning. However, if required the methods below can be used

For general cleaning of dust or loose dirt within the framework or fabric panelling; a normal vacuum cleaner, a dry or a damp cloth can be used to gently remove marks. Please note, do not use any abrasive cleaning products as this may cause damage to the panels. If a cleaning agent is required we recommend testing it on a non-visible part of the panel prior to use.

For general cleaning of fabric, if there are any spillages immediately soak up the fresh stain using a soft cloth or towel to avoid staining the material. If a dried stain has occurred gently clean with a damp white cloth followed by an upholstery cleaner (always test the product prior to use). For tough stains such as Biro or nail varnish, clean with surgical spirit or nail varnish remover then wash using washing up liquid (or equivalent) diluted in lukewarm water.

Take care when using surgical spirit or equivalent as they can dissolve some materials.

For specific cleaning, all our fabric suppliers offer specialised care guides for maintaining their products which can be obtained through them.